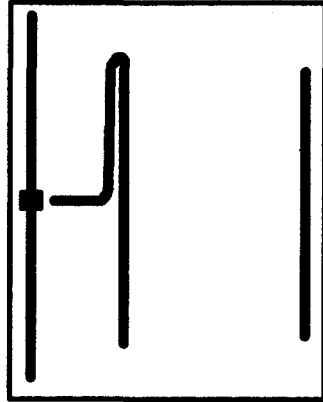


900-930 & 1250-1300 MHz PCB Yagi's WA5VJB



6-7 dBi
Max Signal

Uses: ATV Beacons Rovers
Repeaters Wireless Systems
Dish Feed Satellite

Notes:

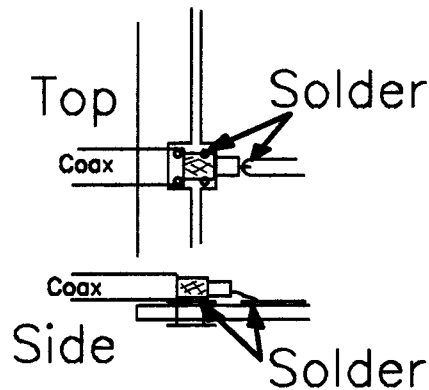
Solder the Coax shield to the pad on the reflector and the center conductor as shown.

.141 and .085" Simi-Rigid coax work well.

Also RG142 and other Teflon Coax's work well.

Use 50 Ohm Coax

Average Gain 7 dBi



Some versions may need to have
the solder coating scraped off.

Title			L-Band Yagi's		
Size	Number		Rev		
B	NTMS		A		
Date: 5-5-2001			Drawn by: KEB		
File Name: LBYagi.pcb			Sheet 1 of 1		

CH1: A -M - 25.89 dB
5.0 dB/ REF - 10.00 dB

CRSR - 25.89 dB
+1.2960GHz

